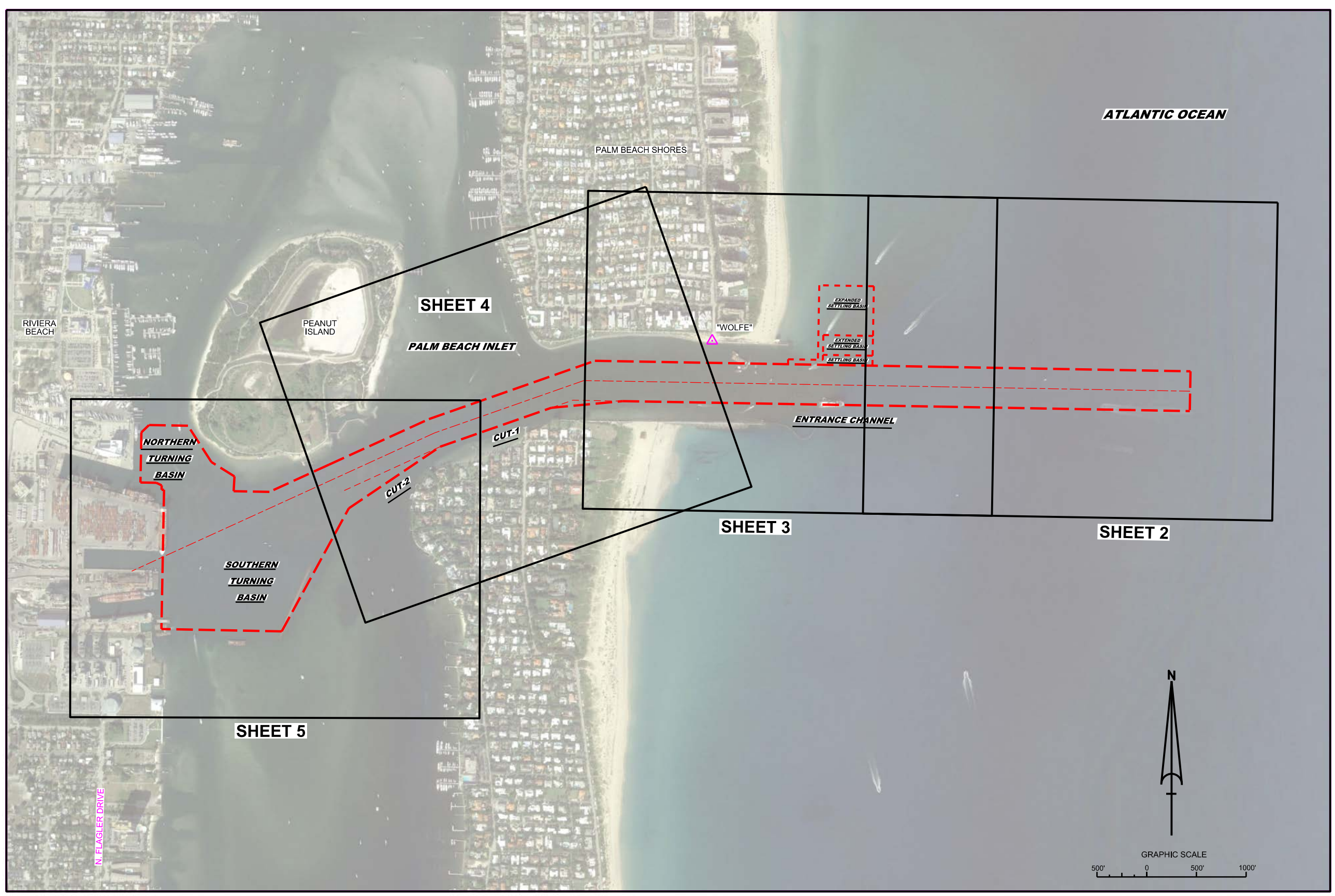


PALM BEACH HARBOR, FLORIDA

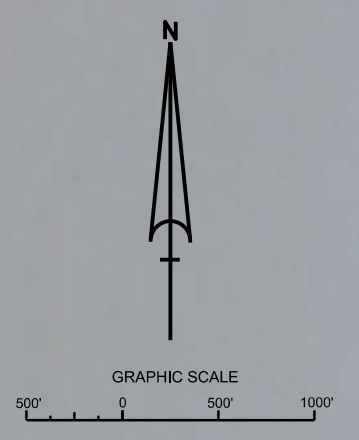
FEBRUARY HYDROGRAPHIC EXAM SURVEY FY21

25, 33, 35, 37 & 39-FOOT PROJECT



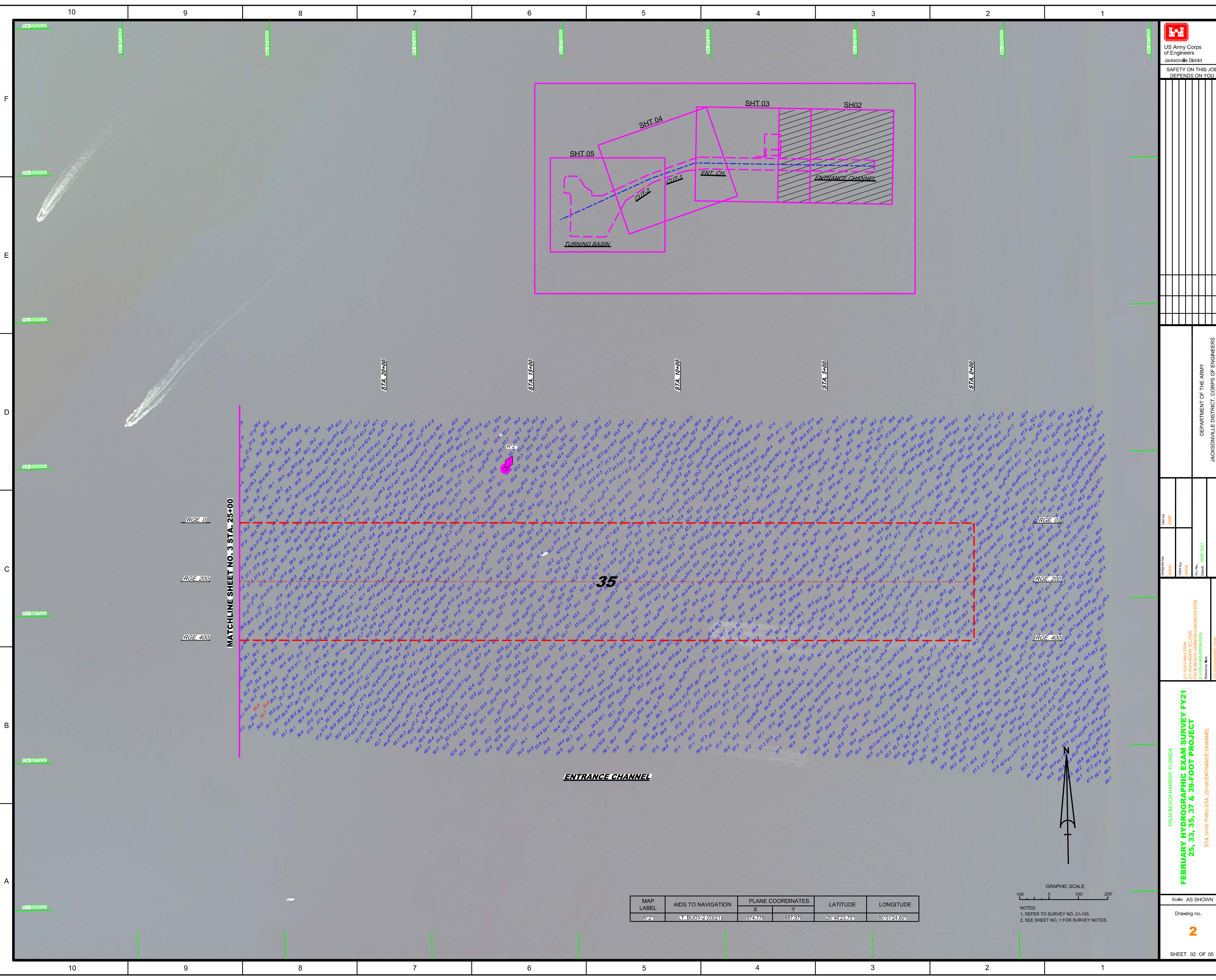
SURVEY NOTES

- REFER TO SURVEY NO. 21-103.
 - SOUNDINGS ARE IN FEET AND TENTHS AND REFER TO NOAA'S REPORTED MEAN LOWER LOW WATER (MLLW) OF THE 1983-2001 TIDAL EPOCH.
 - TIDAL REDUCTIONS WERE OBTAINED UTILIZING A REAL-TIME KINEMATIC (RTK) GPS AND REFERENCED TO MLLW UTILIZING A HYPACK KINEMATIC TIDE DATUM (KTD) MODEL. KTD FILE NAME IS: "PALMBEACH_2018 05 03.KTD".
 - ALL ELEVATIONS ARE BELOW THE CHART DATUM UNLESS PRECEDED BY A (+) SIGN.
 - PLANE COORDINATES ARE BASED ON THE TRANSVERSE MERCATOR PROJECTION FOR THE EAST ZONE OF FLORIDA AND REFERENCED TO NORTH AMERICAN DATUM OF 1983 (NAD83).
 - ALL STATIONING REFERS TO THE CENTERLINE OF THE CHANNEL.
 - THIS SURVEY WAS PERFORMED USING REAL-TIME KINEMATIC (RTK) GPS POSITIONING WITH THE FOLLOWING REFERENCE BASE LOCATION:
 REFERENCE BASE LOCATED AT "WOLFE" (OPUS PID: BBB246)
 TIDE STAFF LOCATED FROM "COE A 310 RESET" (PID: BBN25)
 - DEPTHS DEPICTED BY THIS SURVEY ARE REFERENCED TO MLLW, TIDAL EPOCH 1983-2001 AS REPORTED BY THE NATIONAL OCEANIC AND ATMOSPHERIC ADMINISTRATION (NOAA). A MODIFIED VERSION OF NOAA'S VDATUM MODEL WAS USED TO CALIBRATE TO THE PUBLISHED MLLW HEIGHT OF THE BENCHMARK ASSOCIATED BELOW:
 NOAA TIDAL STATION 872-2588, PORT OF W. PALM BEACH, LAKE WORTH (PID: BBN25)
 VERTICAL MEASUREMENTS WERE MADE USING AN EDGETECH 6205 AND A TELEDYNE ODOM ECHOTRAC E20. ALL SOUNDINGS SHOWN ARE IN HIGH FREQUENCY (550 KHZ).
- | VESSEL | DATE OF SURVEY | CUT |
|--------|----------------|-------------------------------|
| SB-48 | 04 MAR 2021 | ENT. CHANNEL, SETTLING BASINS |
| SB-48 | 10-11 MAR 2021 | CUTS 1 & 2, TURNING BASIN |
- AIDS TO NAVIGATION WERE LOCATED DURING THIS SURVEY.
 - THE INFORMATION DEPICTED ON THIS MAP REPRESENTS THE RESULTS OF SURVEYS MADE ON THE DATES INDICATED ABOVE AND CAN ONLY BE CONSIDERED AS INDICATING THE GENERAL CONDITIONS AT THAT TIME. THIS CHART IS SOLELY FOR THE DISTRIBUTION OF AVAILABLE DEPTHS AT THE TIME OF THE SURVEY.
 - SURVEY ACCURACY PERFORMANCE STANDARDS, QUALITY CONTROL, AND QUALITY ASSURANCE REQUIREMENTS WERE FOLLOWED DURING THIS SURVEY IN ACCORDANCE WITH USACE EM 1110-2-1003, HYDROGRAPHIC SURVEYING, 30 NOV 2013.



LEGEND

▲	MONUMENT
⚓	LIGHTED BEACON
■	GREEN DAYBEACON
■	RED DAYBEACON
⚓	RED LIGHTED BUOY
⚓	GREEN LIGHTED BUOY
⚓	CAN BUOY
⚓	NUN BUOY
⚓	TIDE STAFF
8	PROJECT DEPTH



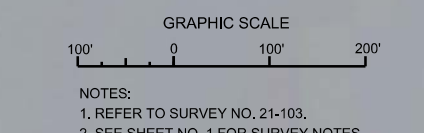
REV.	DATE	DESCRIPTION

DEPARTMENT OF THE ARMY
JACKSONVILLE DISTRICT, CORPS OF ENGINEERS
JACKSONVILLE, FLORIDA

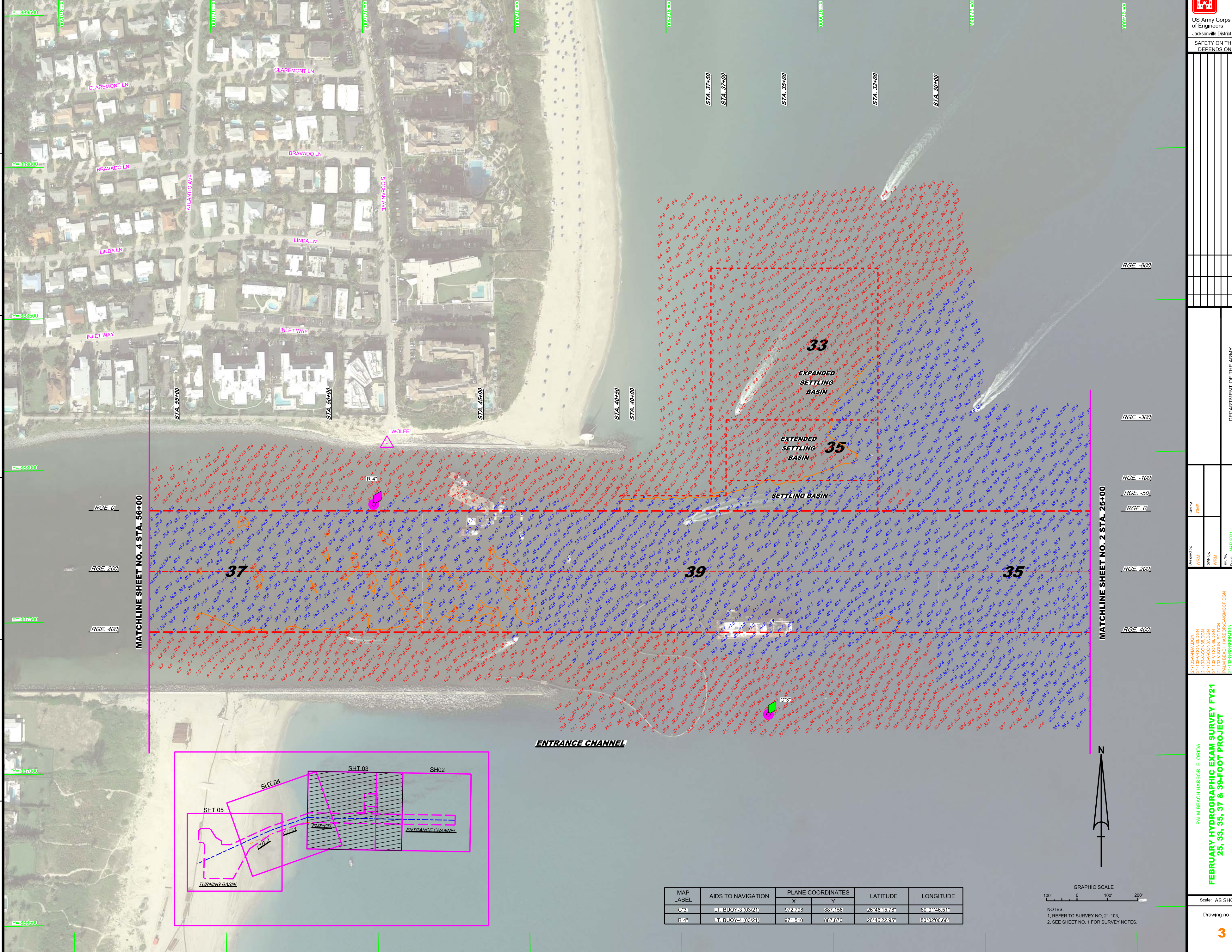
Designed by:
WVM
Checked by:
GHR
Drawn by:
WVM
Scale:
AS SHOWN
Date:
MAR 2021

21-103-AVAV-DGN
PALM BEACH HARBOR-CANAL/CDON
21-103-CB-BRD-1/DGN
Reference File:
21-103-VHSH-02.DGN
File name:

PALM BEACH HARBOR, FLORIDA
FEBRUARY HYDROGRAPHIC EXAM SURVEY FY21
25, 33, 35, 37 & 39-FOOT PROJECT
STA. 0+00 THRU STA. 25+00 ENTRANCE CHANNEL
PLAN

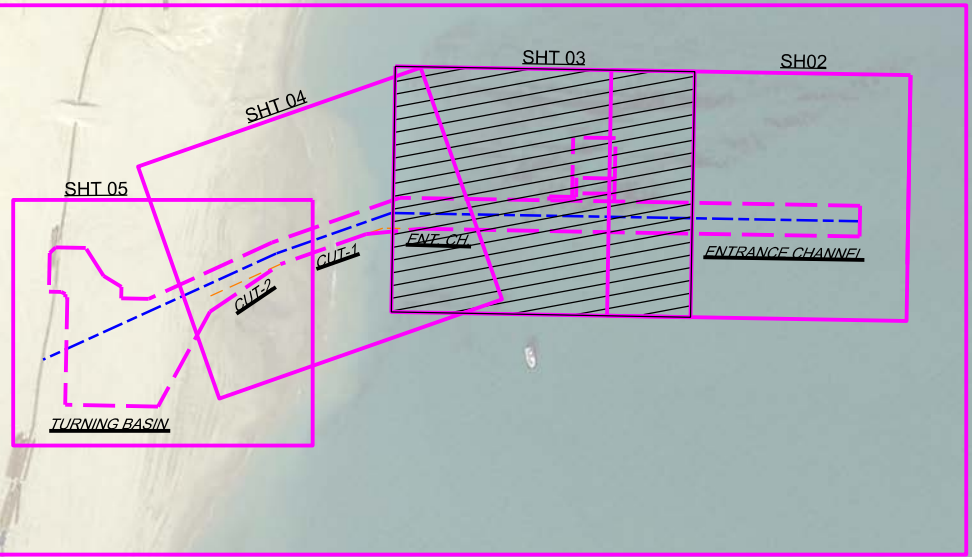


MAP LABEL	AIDS TO NAVIGATION	PLANE COORDINATES		LATITUDE	LONGITUDE
		X	Y		
R-2*	LT. BUOY-2 (03/21)	974.778	887.976	26°46'23.75"	80°01'24.60"

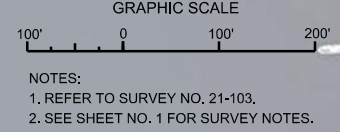


MATCHLINE SHEET NO. 4 STA. 56+00

MATCHLINE SHEET NO. 2 STA. 25+00



MAP LABEL	AIDS TO NAVIGATION	PLANE COORDINATES		LATITUDE	LONGITUDE
		X	Y		
G*3	BUOY#3 (03/21)	972.798	887.156	26°46'15.76"	80°01'46.51"
R*4	BUOY#4 (03/21)	974.510	887.870	26°46'22.95"	80°02'00.66"



US Army Corps of Engineers
Jacksonville District
SAFETY ON THIS JOB
DEPENDS ON YOU

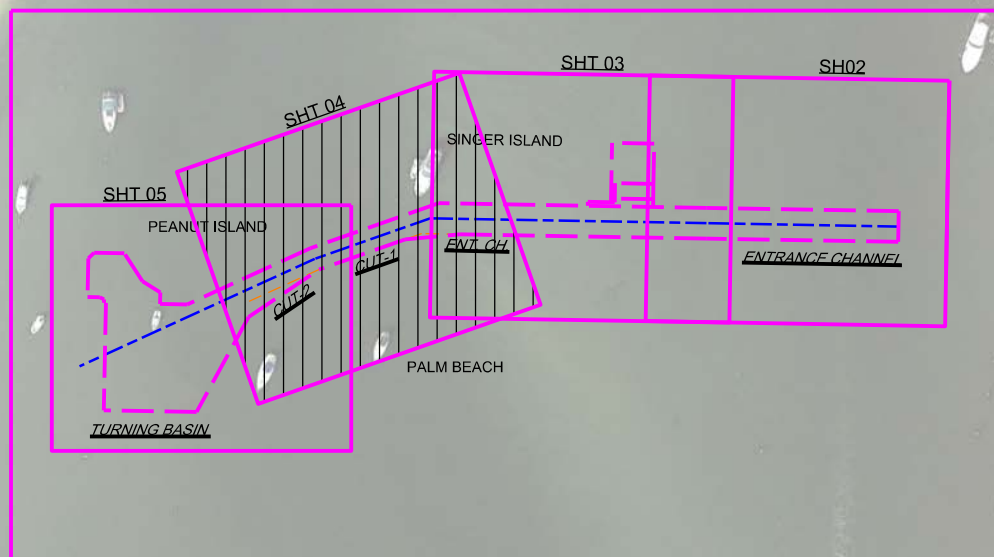
DEPARTMENT OF THE ARMY
JACKSONVILLE DISTRICT, CORPS OF ENGINEERS
JACKSONVILLE, FLORIDA

Call by: GHR
Designed by: WRM
Drawn by: WRM
Checked: MAR 2021

21-103-AV-DGN
21-103-CON-03-DGN
21-103-CON-07-DGN
21-103-CON-08-DGN
PALM BEACH HARBOR-CA-NCC-03-DGN
21-103-BS-BRD-03-DGN
Reference file: 21-103-BS-H03-DGN
File name: PLAN

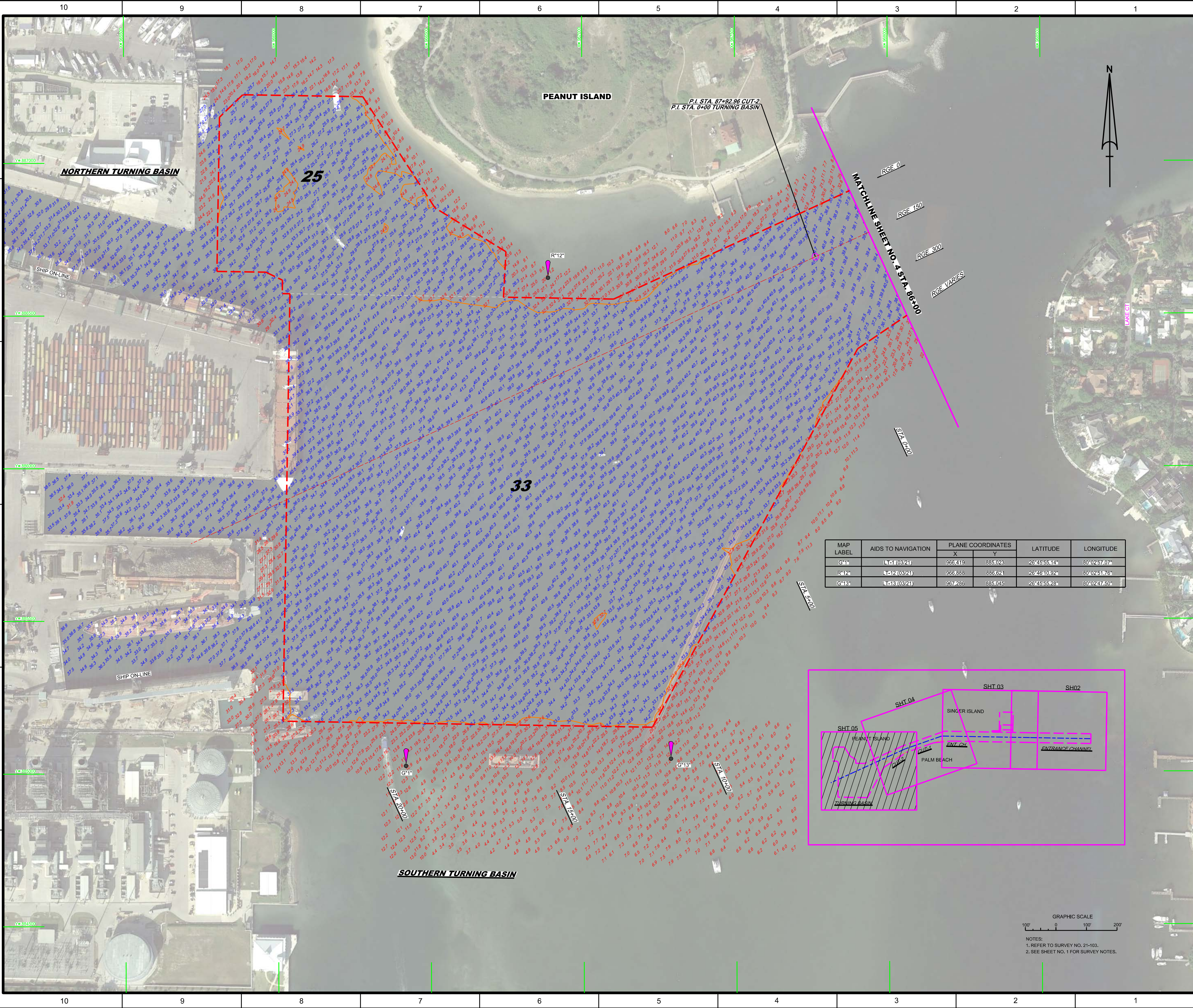
PALM BEACH HARBOR, FLORIDA
FEBRUARY HYDROGRAPHIC EXAM SURVEY FY21
25, 33, 35, 37 & 39-FOOT PROJECT
STA. 25+00 THRU STA. 36+00 ENTRANCE CHANNEL
Scale: AS SHOWN
Drawing no. **3**
SHEET 03 OF 05


MAP LABEL	AIDS TO NAVIGATION	PLANE COORDINATES		LATITUDE	LONGITUDE
		X	Y		
G*5	LT-5 (03/21)	970,652	887,416	26°46'18.52"	80°02'10.17"
R*6	LT. BUOY-6 (03/21)	970,571	887,920	26°46'23.51"	80°02'11.02"
G*7	LT. BUOY-7 (03/21)	969,952	887,403	26°46'18.44"	80°02'17.89"
R*8	LT-8 (03/21)	969,313	887,589	26°46'20.33"	80°02'24.92"
G*9	LT-9 (03/21)	968,802	886,920	26°46'13.74"	80°02'30.61"
R*10	LT-10 (03/21)	968,208	887,159	26°46'16.15"	80°02'37.15"
INFO SIGN	SIGN (03/21)	970,073	887,347	26°46'17.87"	80°02'16.55"



GRAPHIC SCALE
0 100' 200'

NOTES:
1. REFER TO SURVEY NO. 21-103.
2. SEE SHEET NO. 1 FOR SURVEY NOTES.





US Army Corps of Engineers
Jacksonville District
SAFETY ON THIS JOB
DEPENDS ON YOU

DEPARTMENT OF THE ARMY
JACKSONVILLE DISTRICT, CORPS OF ENGINEERS
JACKSONVILLE, FLORIDA

Drawn by: WRM Checked by: WRM Date: MAR 2021	Drawn by: GHR Checked by: WRM Date: MAR 2021	Drawn by: WRM Checked by: WRM Date: MAR 2021	Drawn by: WRM Checked by: WRM Date: MAR 2021
---	---	---	---

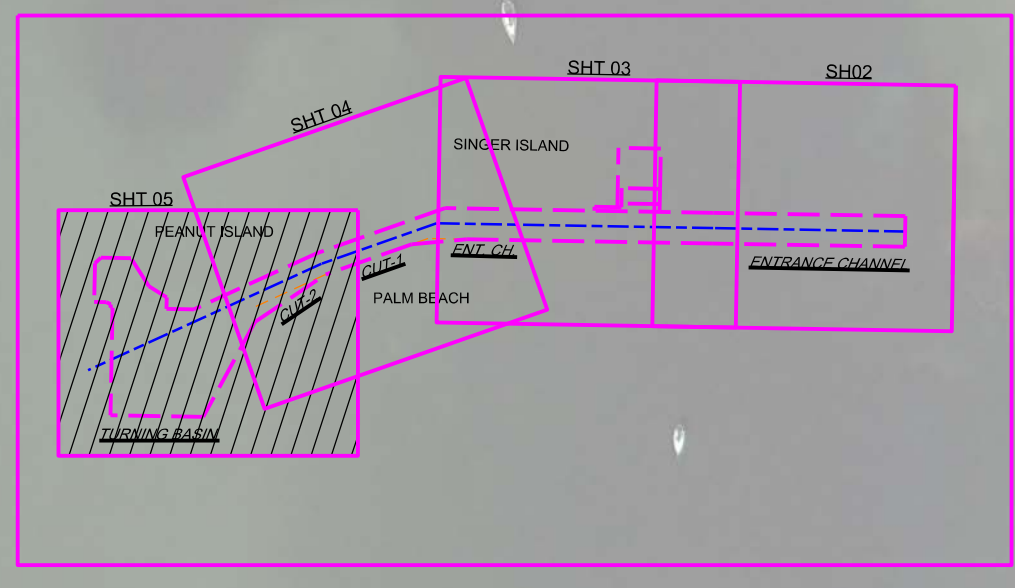
21-103A-CONC/CON
21-103A-SOIL/CON
21-103A-ROAD/CON
21-103A-STR/CON
21-103A-STR/CON
21-103A-STR/CON

FEBRUARY HYDROGRAPHIC EXAM SURVEY FY21
25, 33, 35, 37 & 39-FOOT PROJECT

STA. 86+00 CUT-2 THRU TURNING BASIN
PLAN

Scale: AS SHOWN
Drawing no. **5**
SHEET 05 OF 05

MAP LABEL	AIDS TO NAVIGATION	PLANE COORDINATES		LATITUDE	LONGITUDE
		X	Y		
G41	N 03 (03/2)	956,419	885,023	26°45'55.14"	80°02'57.07"
R12	N 12 (03/2)	966,888	886,621	26°46'10.92"	80°02'51.76"
G43	N 13 (03/2)	967,286	885,045	26°45'55.28"	80°02'47.60"



NOTES:
1. REFER TO SURVEY NO. 21-103.
2. SEE SHEET NO. 1 FOR SURVEY NOTES.